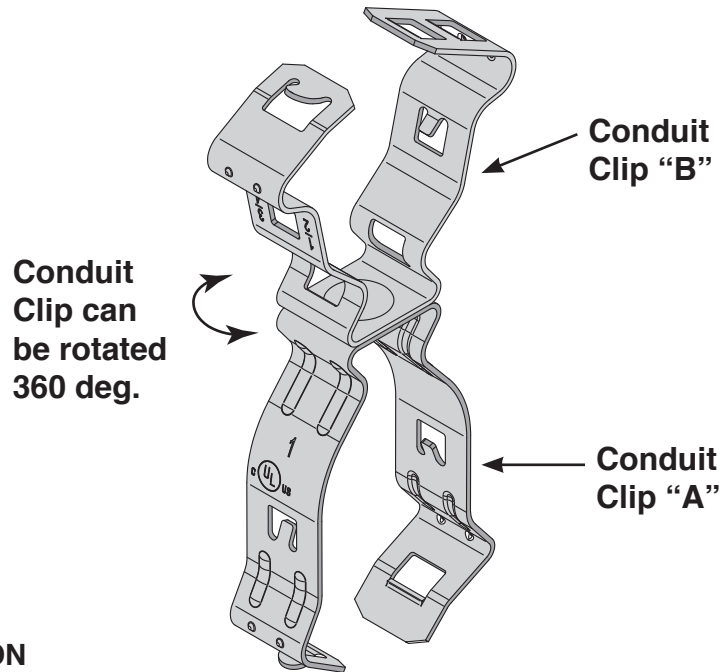


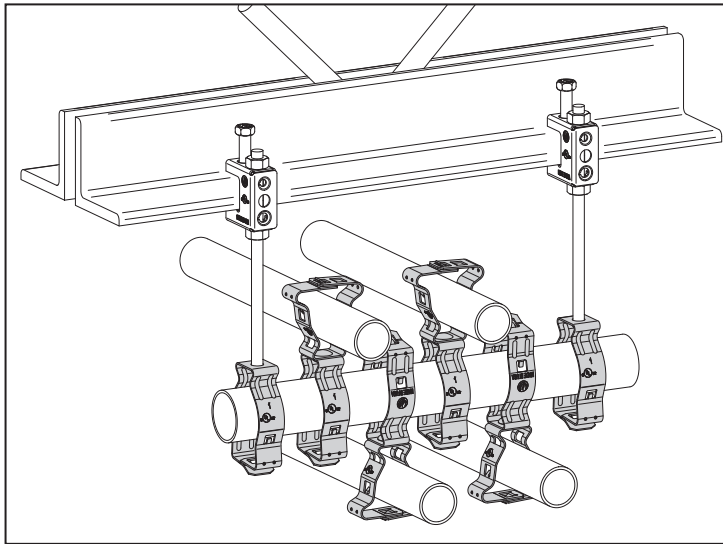
Installation and Instruction Sheets

CC C - CONDUIT CLIP WITH CONDUIT CLIP

SHEET: 1 OF 2



TYPICAL INSTALLATION



Catalog Number	Conduit Clip A	Conduit Clip B
CC16CC812	1" EMT, Rigid	1/2" EMT, IMC, Rigid 3/4" EMT, IMC, Rigid
CC16CC16	1" EMT, Rigid	1" EMT, Rigid
CC16CC20	1" EMT, Rigid	1-1/4" EMT, Rigid
CC16CC24	1" EMT, Rigid	1-1/2" EMT, Rigid
CC16CC32	1" EMT, Rigid	2" EMT, Rigid



Notes:

- For wet or dry applications.
- Total load of trapeze must not exceed 120 lbs.
- For support of conduit per NEC 344.30(B).

Revision: 3



Call ZSi-Foster at
(800) 323-7053
or order now at
ZSi-Foster.com

CUSTOMER RESPONSIBILITIES: At a minimum the customer(s) is responsible for using industry standard hardware and fasteners, inspecting the structural integrity of the structure to which ZSi-Foster products will be attached, conforming to all governing codes and regulations at the job site and following all safety precautions related to the work being performed.

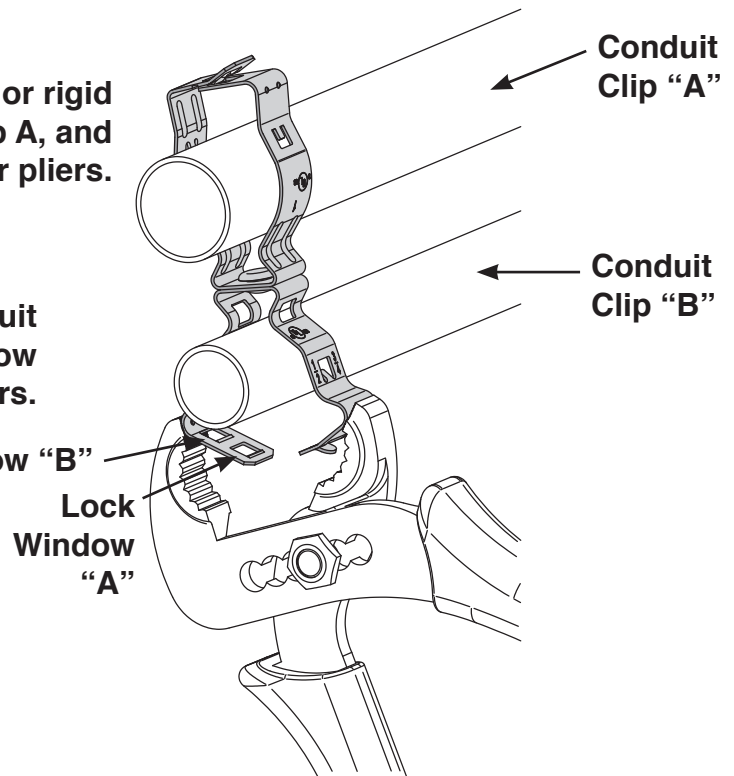
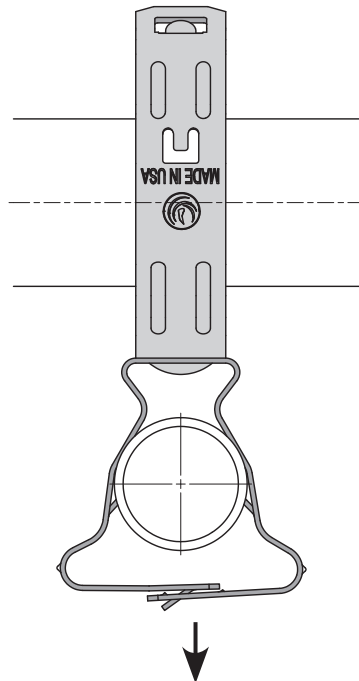
WARNING: ZSi-Foster products must never be used for purposes other than those for which they were designed or in any way that exceeds published load ratings. All load ratings are for static conditions and do not account for dynamic loading such as wind, water or seismic loads. ZSi-Foster products must be installed and used only as indicated in ZSi-Foster installation and instruction sheets. Improper installation, misuse, misapplication or any other failure to completely follow ZSi-Foster's instructions could lead to decreased load rating, product failure, property damage, injury or even death.

STEP 1 & 2:

Step 1: Fit 1" EMT or rigid conduit into conduit clip A, and lock clip with fingers or pliers.

Step 2: Fit conduit into conduit clip B. Lock clip per chart below using fingers or pliers.

	Lock Window "A"	Lock Window "B"
Conduit Size	1/2" Rigid 3/4" EMT, IMC, Rigid	1/2" EMT, IMC
	1" EMT, Rigid	N/A
	1-1/4" Rigid	1-1/4" EMT
	1-1/2" Rigid	1-1/2" EMT
	2" Rigid	2" EMT

**LOAD RATINGS:**

Static load of all sizes = 120 lbs.

Call ZSi-Foster at (800) 323-7053 or order now at ZSi-Foster.com