



Locking Universal Safety Vent Coupling



Locking Plus Safety at About Half the Cost of Safety Alone



#USV3103 1/4" Socket Shown



**Industrial
3 Series
(#11-3 1/4")**



**TruFlate
TF Series
(#TF13 1/4")**

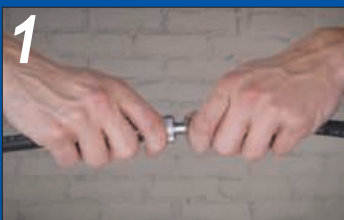


**ARO
210 Series
(#210-11 1/4")**

Works with all 1/4" Body Industrial, TruFlate, and ARO plugs

- Locking Connection Prevents Unintended Separation
- Safely Vents Pressure before Disconnection
- Universal, Works with 3 Major US Interchanges
- Chrome-Plated Steel, Easily Cleaned of Paint or Grease
- 6 Balls Provide Precise Interface with Plug

Grip



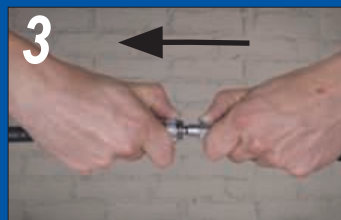
Hold hose steady

Twist



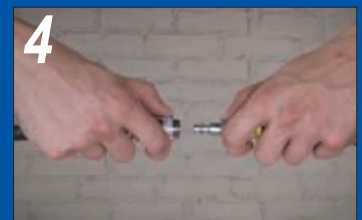
Rotate sleeve to fully exhaust

Pull



Pull back sleeve to release

Separate



Safely disconnect

Call ZSi-Foster at (866) 918-3003 or order now at ZSi-Foster.com



Locking Universal Safety Vent Coupling

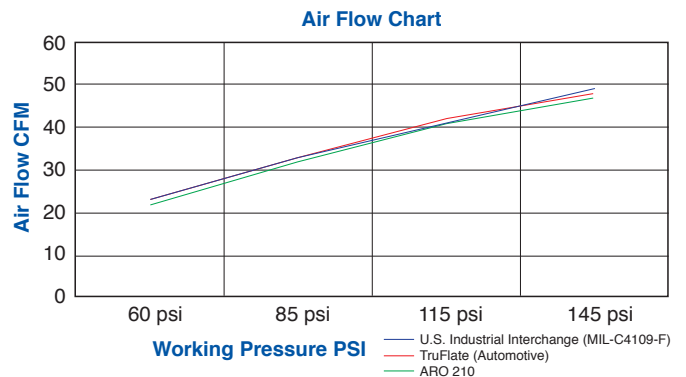


Maximum PSI: 215 psi (14.8 bar)
Media: Compressed Air
Seal Material: Buna-N
Temperature Range: 20° to 140°F (-6.6° to 60°C)
Body Material: Chrome-Plated Steel
Number of Pawls: 6



Part No.	Thread	Interchange	Body Size	Hex	Length	O.D.	Weight (lbs)
USV3103	1/4" Male NPT	Industrial, ARO, TruFlate	1/4"	19mm	2.28"	1.00"	0.238
USV3003	1/4" Female NPT				2.20"		0.269

	Cubic Feet/Minute Flow Rates			
	60 psi	85 psi	115 psi	145 psi
U.S. Industrial Interchange (MIL-C4109-F)	23	33	41	49
TruFlate (Automotive)	23	33	42	48
ARO 210	22	32	41	47



DISTRIBUTED BY:

Call ZSi-Foster
 at (866) 918-3003
 or order now
 at ZSi-Foster.com

ZSi-Foster - Canton, MI | La Mirada, CA | Ocala, FL | Springfield, MO