



# Locking Universal Safety Vent Coupling



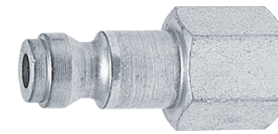
**Locking Plus Safety at About Half the Cost of Safety Alone**



#USV3103 1/4" Socket Shown



**Industrial  
3 Series  
(#11-3 1/4")**



**TruFlate  
TF Series  
(#TF13 1/4")**

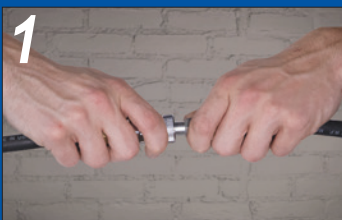


**ARO  
210 Series  
(#210-11 1/4")**

**Works with all 1/4" Body Industrial, TruFlate, and ARO plugs**

- Locking Connection Prevents Unintended Separation
- Safely Vents Pressure before Disconnection
- Universal, Works with 3 Major US Interchanges
- Chrome-Plated Steel, Easily Cleaned of Paint or Grease
- 6 Balls Provide Precise Interface with Plug

**Grip**



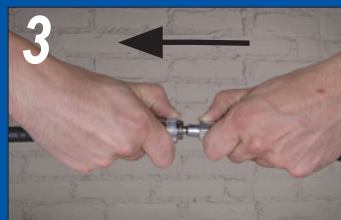
Hold hose steady

**Twist**



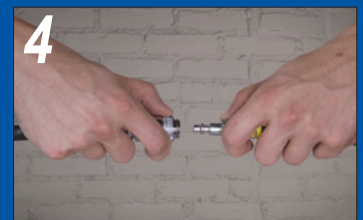
Rotate sleeve to fully exhaust

**Pull**



Pull back sleeve to release

**Separate**



Safely disconnect

Call ZSi-Foster at (866) 918-3003 or order now at [ZSi-Foster.com](http://ZSi-Foster.com)



# Locking Universal Safety Vent Coupling

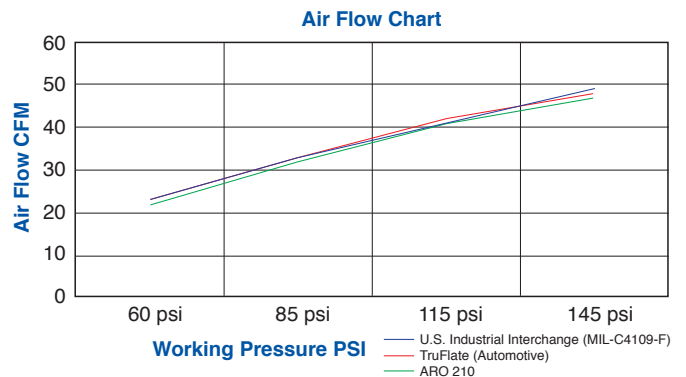


**Maximum PSI:** 215 psi (14.8 bar)  
**Media:** Compressed Air  
**Seal Material:** Buna-N  
**Temperature Range:** 20° to 140°F (-6.6° to 60°C)  
**Body Material:** Chrome-Plated Steel  
**Number of Pawls:** 6



Part No.	Thread	Interchange	Body Size	Hex	Length	O.D.	Weight (lbs)
USV3103	1/4" Male NPT	Industrial, ARO, TruFlate	1/4"	19mm	2.28"	1.00"	0.238
USV3003	1/4" Female NPT				2.20"		0.269

	Cubic Feet/Minute Flow Rates			
	60 psi	85 psi	115 psi	145 psi
<b>U.S. Industrial Interchange</b> (MIL-C4109-F)	23	33	41	49
<b>TruFlate</b> (Automotive)	23	33	42	48
<b>ARO 210</b>	22	32	41	47



DISTRIBUTED BY:

Call ZSi-Foster  
 at (866) 918-3003  
 or order now  
 at ZSi-Foster.com

**ZSi-Foster**

Springfield, MO | Canton, MI | La Mirada, CA